

1 2 3 4 5 6 7 8

REV	LOCATIONS	DESCRIPTION	DATE	REVISER	APPD
1	△	Structure of Housing change	26/SEP/23	MATT	MATT

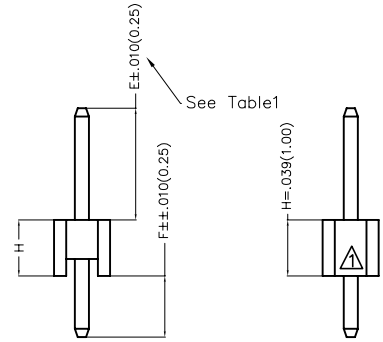
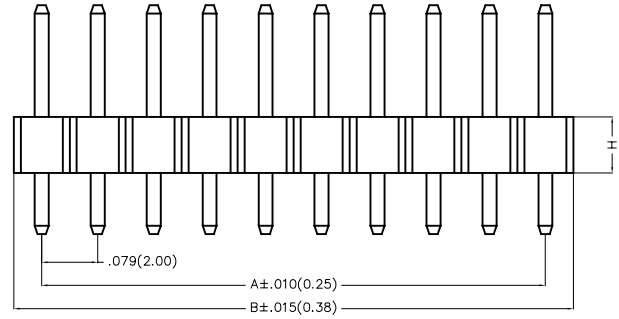
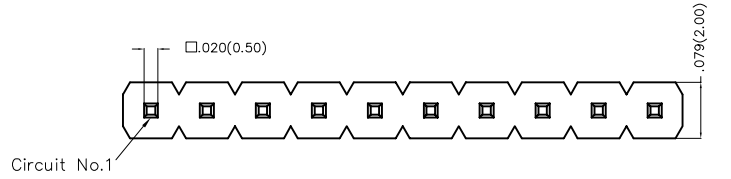
SPECIFICATIONS

Electrical

Current Rating: 2.0A AC(rms)/DC
 Voltage Rating: 250V AC(rms)/DC
 Contact Resistance: 20 mΩ Max
 Insulation Resistance: 1000 MΩ Min
 Withstanding Voltage: 600V AC r.m.s
 Temperature Range—Operating: -40°C~+105°C

Material

Housing: Glass Filled Polyester (UL 94V-0), Color: Black
 Pin: Brass
 Pin Plating: Gold plated/ Selective gold in contact area, bright tin on tail



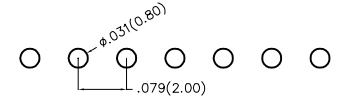
Only H=.039(1.00)

Ordering Information

FPH 200 01 S XX S X XX X XX B
 1 2 3 4 5 6 7 8 9 10 11

1 Category FPH—Pin Header	2 Series Number 200—Pitch2.00mm	3 Distinction No. 01	4 Row Option S—Single Row	5 Circuits XX	6 Entry Angle S—180° Vertical
7 Plating 1—Gold plated 3—Selective gold in contact area, bright tin on tail	8 Thickness of Plating 00—Gold flash 01—1μ" 15—15μ"	9 Material—Resin 1—PBT 4—PA6T	10 Size 01,02... —Serial number (See Table1) Custom length available	11 Packaging B—PE Bag	

Custom plate available



Recommended P.C.Board Layout

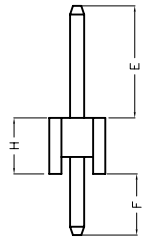
THIRD ANGLE PROJECTION	GENERAL TOLERANCES (UNLESS SPECIFIED)		APPROVE BY FRANK	DATE 25/JUN/13	PART NO. FPH20001-SXXSXXXXXB	ITEM NO. FPH20001	
	DESIGN UNITS Inch (metric)	X.±.012(0.30) X.X±.008(0.20) X.XX±.006(0.15) X.XXX±.004(0.10)	X:±5° .X:±2° .XX:±1° .XXX:±0.5°	CHECKED BY CHERRY	DATE 25/JUN/13	TITLE Board to Board(Pin Header) Pitch 2.00mm 180° Vertical(DIP)	
SCALE 5:1	SIZE A4		DRAWN BY JACOB	DATE 25/JUN/13	THIS DRAWING CONTAINS INFORMATION THAT IS PROPRIETARY TO TXGA INDUSTRIAL ELECTRONICS(S.Z)CO.,LTD AND SHOULD NOT BE USED WITHOUT WRITTEN PERMISSION		

1 2 3 4 5 6 7 8

REV	LOCATIONS	DESCRIPTION	DATE	REVISER	APPD

Table1



A	Serial number	Dimensions(in/mm)			Canceled Circuits	Note	Serial number	Dimensions(in/mm)			Canceled Circuits	Note
		E	F	H				E	F	H		
	01	.157(4.00)	.110(2.80)	.079(2.00)	——		29	.157(4.00)	.079(2.00)	.039(1.00)	——	
	02	.283(7.20)	.150(3.80)	.079(2.00)	——		30	.154(3.90)	.110(2.80)	.079(2.00)	——	
	03	.787(20.0)	.394(10.0)	.039(1.00)	——		31	.157(4.00)	.035(0.90)	.039(1.00)	——	
	04	1.063(27.0)	.118(3.0)	.039(1.00)	——		32	.087(2.20)	.079(2.00)	.079(2.00)	——	
B	05	1.063(27.0)	.118(3.0)	.039(1.00)	No.2	Only 3Circuits	33	.118(3.00)	.110(2.80)	.079(2.00)	——	
	06	.090(2.29)	.065(1.65)	.059(1.50)	——		34	.197(5.00)	.079(2.00)	.059(1.50)	——	
	07	.276(7.00)	.110(2.80)	.079(2.00)	——		35	.445(11.30)	.028(0.70)	.079(2.00)	——	
	08	.079(2.00)	.110(2.80)	.079(2.00)	——		36	.047(1.20)	.047(1.20)	.098(2.50)	——	
	09	.150(3.80)	.110(2.80)	.079(2.00)	——		37	.689(17.50)	.118(3.00)	.079(2.00)	——	
C	10	.669(17.00)	.118(3.00)	.079(2.00)	——		38	.161(4.10)	.035(0.90)	.079(2.00)	——	
	11	.256(6.50)	.118(3.00)	.079(2.00)	——		39	.150(3.80)	.110(2.80)	.039(1.00)	——	
	12	.157(4.00)	.098(2.50)	.079(2.00)	——		40	.512(13.00)	.118(3.00)	.098(2.50)	——	
	13	.240(6.10)	.138(3.50)	.079(2.00)	——		41	.244(6.20)	.118(3.00)	.079(2.00)	——	
	14	.118(3.00)	.118(3.00)	.079(2.00)	——		42	.087(2.20)	.142(3.60)	.039(1.00)	——	
	15	.157(4.00)	.098(2.50)	.079(2.00)	No.1,4,7,10,13	Only 13Circuits	43	.197(5.00)	.138(3.50)	.079(2.00)	——	
D	16	.118(3.00)	.236(6.00)	.079(2.00)	——		44	.236(6.00)	.118(3.00)	.098(2.50)	——	
	17	.236(6.00)	.118(3.00)	.039(1.00)	——		45					
	18	.236(6.60)	.118(3.00)	.039(1.00)	——		46	.236(6.00)	.098(2.50)	.079(2.00)	——	
	19	.276(7.00)	.110(2.80)	.059(1.50)	——		47	.157(4.00)	.110(2.80)	.079(2.00)	No.2	Only 3Circuits
E	20	.098(2.50)	.079(2.00)	.079(2.00)	——		48	.157(4.00)	.035(0.90)	.039(1.00)	No.2	Only 3Circuits
	21	.138(3.50)	.095(2.40)	.059(1.50)	——		49	.157(4.00)	.035(0.90)	.039(1.00)	No.2~7	Only 8Circuits
	22	.413(10.50)	.079(2.00)	.059(1.50)	No.2	Only 3Circuits	50	.394(10.00)	.035(0.90)	.039(1.00)	No.2~7	Only 8Circuits
	23	.118(3.00)	.118(3.00)	.039(1.00)	——		51	.280(7.10)	.098(2.50)	.098(2.50)	——	
	24	.079(2.00)	.079(2.00)	.039(1.00)	——							
	25	.138(3.50)	.138(3.50)	.059(1.50)	No.2	Only 6Circuits						
F	26	.126(3.20)	.138(3.50)	.059(1.50)	——							
	27	.157(4.00)	.079(2.00)	.039(1.00)	——							
	28	.315(8.00)	.118(3.00)	.079(2.00)	——							



<p>THIRD ANGLE PROJECTION</p>	GENERAL TOLERANCES (UNLESS SPECIFIED)		APPROVE BY	DATE	PART NO.	ITEM NO.	<p>Building Technology Cornerstone</p>
	X.±.012(0.30)	X:±5'	FRANK	25/JUN/13	FPH20001-SXXSXXXXXB	FPH20001	
	X.X±.008(0.20)	.X'±2'	CHECKED BY	DATE	TITLE	REV 1	
	X.XX±.006(0.15)	.XX'±1'	CHERRY	25/JUN/13	Board to Board(Pin Header) Pitch 2.00mm 180° Vertical(DIP)	SHEET NO. 2/3	
SCALE	SIZE	X.XXX±.004(0.10)	.XX'±0.5'	DRAWN BY	DATE	THIS DRAWING CONTAINS INFORMATION THAT IS PROPRIETARY TO TXGA INDUSTRIAL ELECTRONICS(S.Z)CO.,LTD AND SHOULD NOT BE USED WITHOUT WRITTEN PERMISSION	
5:1	A4			JACOB	25/JUN/13		

REV	LOCATIONS	DESCRIPTION	DATE	REVISER	APPD

Circuits (n)	Part No.	Dimensions(in/mm)		Circuits (n)	Part No.	Dimensions(in/mm)	
		A	B			A	B
1	FPH20001-S01SXXXXXXB	—	.079(2.00)	21	FPH20001-S21SXXXXXXB	1.574(40.00)	1.654(42.00)
2	FPH20001-S02SXXXXXXB	.079(2.00)	.157(4.00)	22	FPH20001-S22SXXXXXXB	1.654(42.00)	1.732(44.00)
3	FPH20001-S03SXXXXXXB	.157(4.00)	.236(6.00)	23	FPH20001-S23SXXXXXXB	1.732(44.00)	1.811(46.00)
4	FPH20001-S04SXXXXXXB	.236(6.00)	.315(8.00)	24	FPH20001-S24SXXXXXXB	1.811(46.00)	1.890(48.00)
5	FPH20001-S05SXXXXXXB	.315(8.00)	.394(10.00)	25	FPH20001-S25SXXXXXXB	1.890(48.00)	1.969(50.00)
6	FPH20001-S06SXXXXXXB	.394(10.00)	.472(12.00)	26	FPH20001-S26SXXXXXXB	1.969(50.00)	2.047(52.00)
7	FPH20001-S07SXXXXXXB	.472(12.00)	.551(14.00)	27	FPH20001-S27SXXXXXXB	2.047(52.00)	2.126(54.00)
8	FPH20001-S08SXXXXXXB	.551(14.00)	.630(16.00)	28	FPH20001-S28SXXXXXXB	2.126(54.00)	2.205(56.00)
9	FPH20001-S09SXXXXXXB	.630(16.00)	.709(18.00)	29	FPH20001-S29SXXXXXXB	2.205(56.00)	2.283(58.00)
10	FPH20001-S10SXXXXXXB	.709(18.00)	.787(20.00)	30	FPH20001-S30SXXXXXXB	2.283(58.00)	2.362(60.00)
11	FPH20001-S11SXXXXXXB	.787(20.00)	.866(22.00)	31	FPH20001-S31SXXXXXXB	2.362(60.00)	2.441(62.00)
12	FPH20001-S12SXXXXXXB	.866(22.00)	.945(24.00)	32	FPH20001-S32SXXXXXXB	2.441(62.00)	2.520(64.00)
13	FPH20001-S13SXXXXXXB	.945(24.00)	1.024(26.00)	33	FPH20001-S33SXXXXXXB	2.520(64.00)	2.598(66.00)
14	FPH20001-S14SXXXXXXB	1.024(26.00)	1.102(28.00)	34	FPH20001-S34SXXXXXXB	2.598(66.00)	2.677(68.00)
15	FPH20001-S15SXXXXXXB	1.102(28.00)	1.181(30.00)	35	FPH20001-S35SXXXXXXB	2.677(68.00)	2.756(70.00)
16	FPH20001-S16SXXXXXXB	1.181(30.00)	1.260(32.00)	36	FPH20001-S36SXXXXXXB	2.756(70.00)	2.835(72.00)
17	FPH20001-S17SXXXXXXB	1.260(32.00)	1.339(34.00)	37	FPH20001-S37SXXXXXXB	2.835(72.00)	2.913(74.00)
18	FPH20001-S18SXXXXXXB	1.339(34.00)	1.417(36.00)	38	FPH20001-S38SXXXXXXB	2.913(74.00)	2.992(76.00)
19	FPH20001-S19SXXXXXXB	1.417(36.00)	1.496(38.00)	39	FPH20001-S39SXXXXXXB	2.992(76.00)	3.071(78.00)
20	FPH20001-S20SXXXXXXB	1.496(38.00)	1.574(40.00)	40	FPH20001-S40SXXXXXXB	3.071(78.00)	3.150(80.00)

 THIRD ANGLE PROJECTION	GENERAL TOLERANCES (UNLESS SPECIFIED)		APPROVE BY FRANK	DATE 25/JUN/13	PART NO. FPH20001-SXXSXXXXXXB	ITEM NO. FPH20001	 Building Technology Cornerstone	
	X.±.012(0.30)	X'.±5'	CHECKED BY CHERRY	DATE 25/JUN/13	TITLE Board to Board(Pin Header) Pitch 2.00mm 180° Vertical(DIP)			REV 1
	DESIGN UNITS Inch (metric)	X.XX±.008(0.20)	.X'±2'	DRAWN BY JACOB	DATE 25/JUN/13	THIS DRAWING CONTAINS INFORMATION THAT IS PROPRIETARY TO TXGA INDUSTRIAL ELECTRONICS(S.Z)CO.,LTD AND SHOULD NOT BE USED WITHOUT WRITTEN PERMISSION		
	SCALE 5:1	SIZE A4	X.XX±.006(0.15)	.XX'±1'	X.XX±.004(0.10)	.XX'±0.5'		